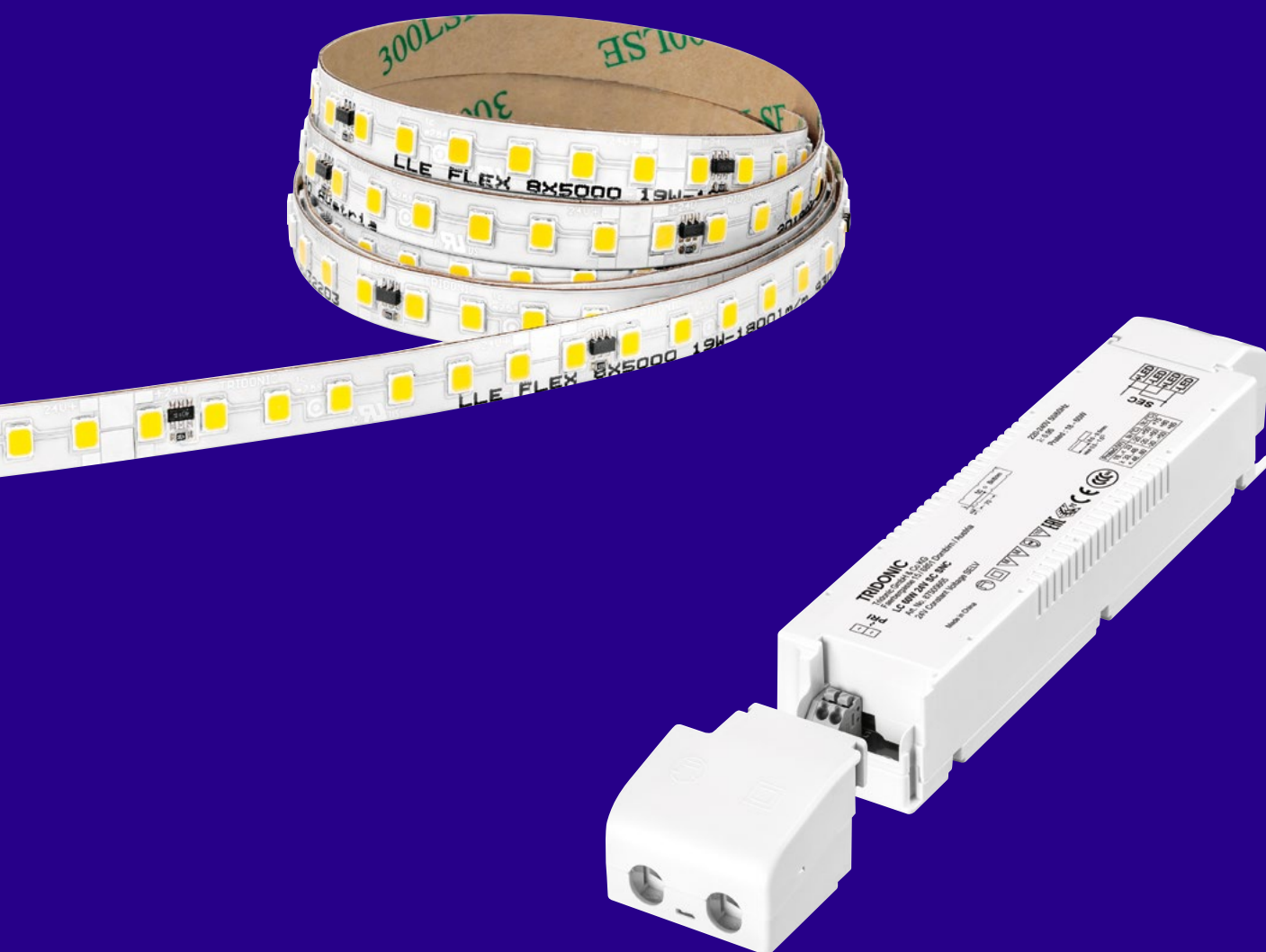


LED Module & Driver

# Application Constant voltage, 24 V

## Homogeneous light from the reel



TRIDONIC

# Applications and Product Portfolio

## Homogeneous light from the reel

### Main applications

#### Cove lighting



- Including accent and indirect lighting
- For hotels, shops, guest rooms, etc.

#### General illumination



- For flexible applications
- For shops, commercial premises, etc.

#### Profile lighting



- Shelf and accent lighting
- Linear Furniture lighting

**The extremely homogeneous 24 V LED module LLE FLEX continuous lighting strip can perform numerous different lighting tasks – from decorative indirect, cove or accent lighting to direct general lighting with light lines. It can also be used in profile lighting.**

Matching 24 V constant voltage drivers from Tridonic complete the LLE FLEX modules, creating a perfect system solution. The flexible LED strips can be used for a variety of lighting solutions, to meet any demands.

Feature	LLE FLEX EXC2 IP67	LLE FLEX EXC3	LLE FLEX ADV	LLE FLEX SNC
Dimensions (L x B x W)	5,000 x 15.5 mm	50,000 x 8 x 1.5 mm 50,000 x 12 x 1.5 mm 5,000 x 8 x 1.5 mm 5,000 x 12 x 1.5 mm	50,000 x 8 x 2 mm, 50,000 x 12 x 2 mm 5,000 x 8 x 2 mm 5,000 x 12 x 2 mm	4,800 x 8 x 2 mm
Typ luminous flux	600 lm, 1,200 lm, 1,800 lm	600 lm, 1,200 lm, 1,800 lm, 2,500 lm 3,000 lm, 4,000 lm	600 lm, 1,200 lm, 1,800 lm, 2,500 lm, 3,000 lm, 4,000 lm	600 lm, 1,200 lm, 1,800 lm
Colour temperature	2,700 K, 3,000 K, 4,000 K and SDCM 3	2,700 K, 3,000 K, 4,000 K 6,500 K with SDCM 3	2,700 K, 3,000 K, 4,000 K and 6,500 K with SDCM 3	2,700 K, 3,000 K, 4,000 K and 6,500 K with SDCM 5
Module efficacy	119 lm/W	135 lm/W	150 lm/W	125 lm/W
Colour rendering index	CRI >90	CRI >90	CRI >80	CRI >80
Cutting options	50 mm Cutting options	50 mm Cutting options	100 mm Cutting options	50 mm Cutting options
Pitch distance	7.1 mm Pitch distance	7.1 mm Pitch distance	14.2 mm Pitch distance	8.3 mm Pitch distance

# Applications and Product Portfolio

## Homogeneous light from the reel

### Matching constant current drivers at a glance

Portfolio	premium (PRE)	excite (EXC)	essence (SNC)
	Comfortable	Flexible	Cost effective
	<ul style="list-style-type: none"> <li>— Application-related specifications</li> <li>— Focus on core functions</li> <li>— Proven Tridonic quality</li> </ul>	<ul style="list-style-type: none"> <li>— Maximum convenience for your application</li> <li>— Universal input voltage range</li> </ul>	<ul style="list-style-type: none"> <li>— Easy to connect</li> <li>— Highest efficiency</li> <li>— Excellent quality of light for sophisticated demands</li> </ul>

**Available in three categories** – premium (PRE), excite (EXC) and essence (SNC) – the 24 V constant-current drivers are always able to offer the perfect solution. Depending on requirements, the lighting can be dimmed via DALI or an external PMW dimmer or controlled wirelessly via the integrated basicDIM Wireless module.

Type	premium Series (PRE)	excite Series (EXC)	excite Series (EXC) IP67	essence Series (SNC)
Dimmable	basicDIM Wireless, one4all	via external bDW CV module PMW LED dimmer	via external bDW CV module PMW LED dimmer	via external bDW CV module PMW LED dimmer
Casing types	SC, Ip	SR	IP67 L	SC, Ip
Wattages	18, 35, 60, 100, 150 W	35, 60, 96, 100, 150, 180 W	35, 75, 100, 200 W	18, 35, 60, 100, 200 W
Input voltage (V)	220–240	120–277	90–305	220–240
Output voltage (V)	24 V	12 V, 24 V	24 V	24 V
Lifetime	up to 50,000 h	up to 50,000 h	up to 50,000 h	up to 50,000 h
Suitable for Emergency	yes	no	no	no

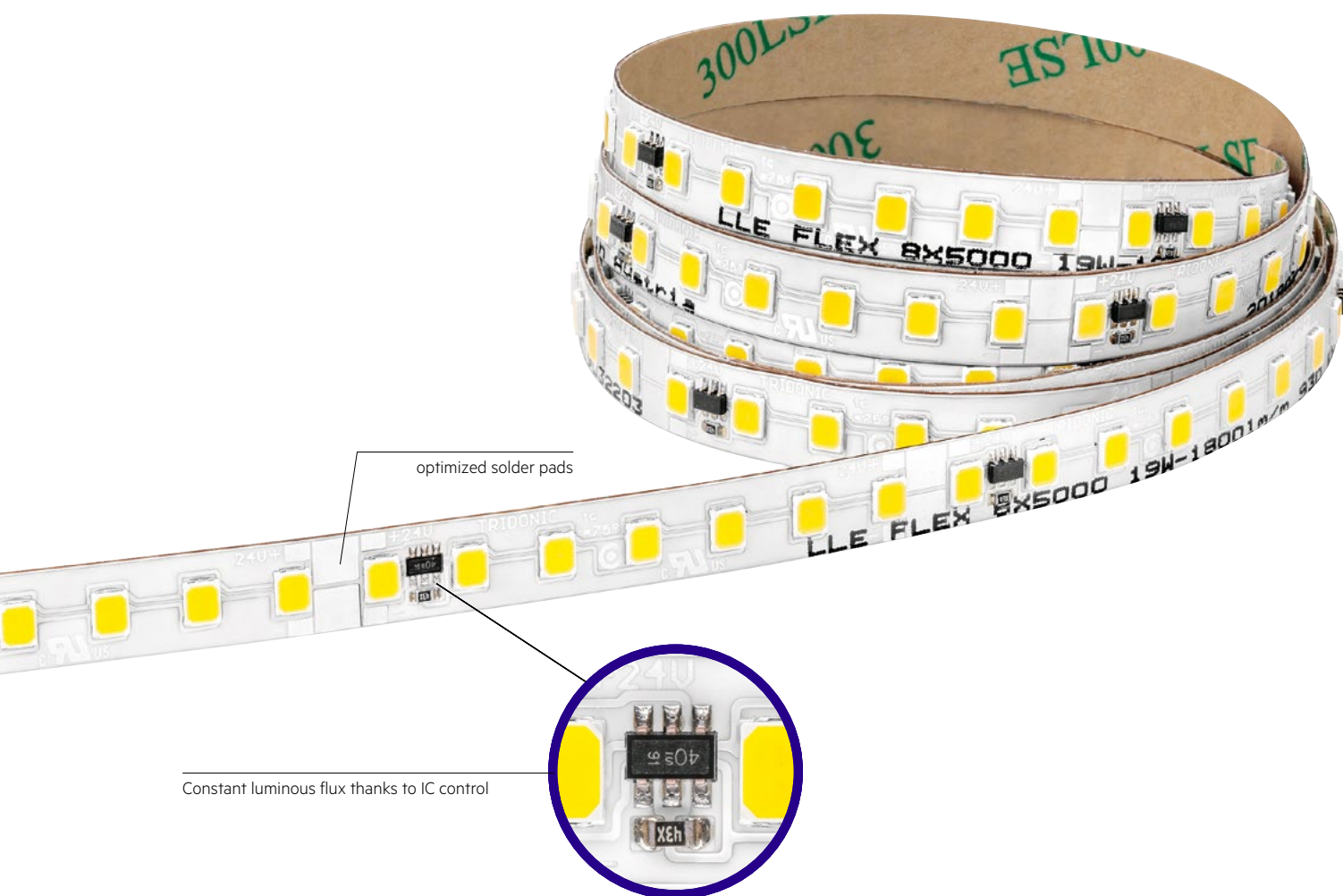
Modul LLE FLEX

## excite (EXC3) + advanced (ADV3)

More flexibility and greater efficiency – made in Austria

### More flexibility. Optimised luminous flux. Maximum design freedom.

The second generation of flexible 24 V lighting strips is waiting, with a new continuous PCB, which is produced using the reel2reel method and does not require any solder points at all. The possibility of making a greater number of more accurate cuts means the design possibilities are practically unlimited.



# excite3 (EXC3)

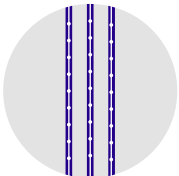
## More flexibility and greater efficiency – made in Austria

### Advantages of reel2reel



#### Maximum quality

The continuous substrate is equipped with several control points which immediately detect any irregularities. Defects can thus be reduced to a minimum and easily tracked.



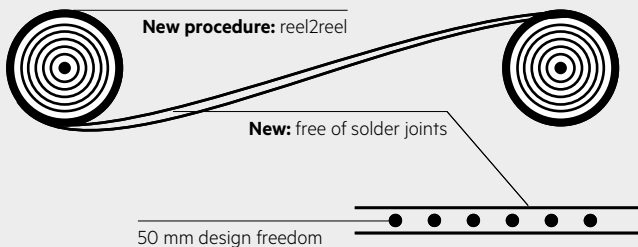
#### Constant luminous flux

The LLE FLEX module has a wide luminous flux range from 600 to 4,000 lm/m. To keep the luminous flux constant the LED chips were subject to a targeted update and the LED strips provided with an IC control every five centimetres.



#### Individual lengths

Given the option of making a cut every five or ten centimetres, the LED strip can be individually adapted to any requirement, offering impressively simple separability and extremely low light tolerance.



**Soldering was yesterday's game. With reel2reel, Tridonic is using an innovative production method, which allows for a series of outstanding features for the LLE FLEX flexible LED strips.**

In contrast to manual soldering, which is used on over 90 percent of the length sections, the automatic reel2reel method does not require any solder points at all. Thus, the LLE FLEX can be cut at many more places and offers high flexibility.

Modul LLE FLEX

## excite3 (EXC3)

More flexibility and greater efficiency – made in Austria

At a glance:

### Module LLE FLEX EXC3: reel2reel

- Dimmable 24 V constant voltage strip (SELV)
- Extremely narrow pitch distance enables short distance to diffuser and outstanding homogeneity
- Efficacy of the module up to 135 lm/W
- Luminous flux range of 600, 1,200, 1,800 and 2,500 lm/m, 3,000 lm/m, 4,000 lm/m
- Colour temperature 2,700, 3,000, 4,000 and 6,500 K with SDCM 3
- High design freedom due to 5 cm cut-options
- PCB to PCB and wire to PCB connectors for toolless handling and connection\*
- reel2reel – No solder joints on the tape, easy to separate and low length tolerances

Guarantee 5 years

Lifetime 50,000 hrs

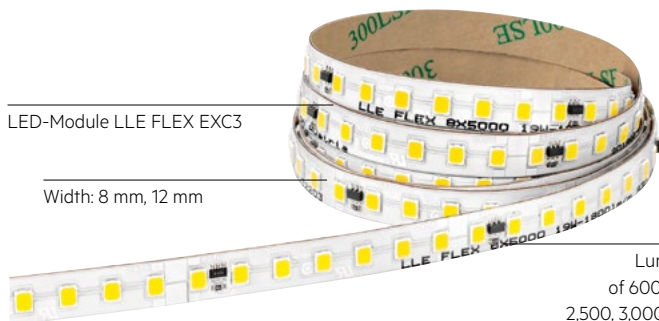
MacAdam 3

Made in Austria

\* Valid for a width of 8 mm

LED-Module LLE FLEX EXC3

Width: 8 mm, 12 mm



Luminous flux range of 600, 1,200, 1,800 und 2,500, 3,000 und 4,000 lm/m

# excite3 (EXC3)

More flexibility and greater efficiency – made in Austria

## Module LLE FLEX CRI90 EXC2

Type	Colour-temperature (K)	Mac Adam	Typ. luminous flux $\tau_p = 65^\circ\text{C}^{\text{①}}$ (lm/m)	CRI	Typ. power consumption $\tau_p = 65^\circ\text{C}^{\text{①}}$ (W/m)	Luminous efficacy of module $\tau_p = 65^\circ\text{C}$ (lm/W)	Order No.
<b>LLE FLEX EXC3 width: 8 mm</b>							
<b>5,000 mm roll</b>							
LLE FLEX 8x5000 6W-600lm/m 927 EXC3	2,700	SDCM 3	615	> 90	5.3	115	28003606
LLE FLEX 8x5000 6W-600lm/m 930 EXC3	3,000	SDCM 3	630	> 90	5.3	118	28003607
LLE FLEX 8x5000 6W-600lm/m 940 EXC3	4,000	SDCM 3	595	> 90	4.9	122	28003608
LLE FLEX 8x5000 6W-600lm/m 965 EXC3	6,500	SDCM 3	595	> 90	4.9	122	28003609
LLE FLEX 8x5000 11W-1200lm/m 927 EXC3	2,700	SDCM 3	1,200	> 90	10.2	118	28003610
LLE FLEX 8x5000 11W-1200lm/m 930 EXC3	3,000	SDCM 3	1,230	> 90	10.2	121	28003611
LLE FLEX 8x5000 11W-1200lm/m 940 EXC3	4,000	SDCM 3	1,160	> 90	9.2	126	28003612
LLE FLEX 8x5000 11W-1200lm/m 965 EXC3	6,500	SDCM 3	1,160	> 90	9.2	126	28003613
LLE FLEX 8x5000 19W-1800lm/m 927 EXC2	2,700	SDCM 3	1,730	> 90	15.3	117	28003614
LLE FLEX 8x5000 19W-1800lm/m 930 EXC2	3,000	SDCM 3	1,820	> 90	15.3	120	28003615
LLE FLEX 8x5000 17W-1800lm/m 940 EXC2	4,000	SDCM 3	1,840	> 90	14.3	126	28003616
LLE FLEX 8x5000 17W-1800lm/m 965 EXC2	6,500	SDCM 3	1,840	> 90	14.3	126	28003617
LLE FLEX 8x5000 27W-2500lm/m 927 EXC2	2,700	SDCM 3	2,400	> 90	21.8	116	28003618
LLE FLEX 8x5000 27W-2500lm/m 930 EXC2	3,000	SDCM 3	2,520	> 90	20.6	119	28003619
LLE FLEX 8x5000 27W-2500lm/m 940 EXC2	4,000	SDCM 3	2,500	> 90	20.6	125	28003620
LLE FLEX 8x5000 23W-2500lm/m 965 EXC2	6,500	SDCM 3	2,500	> 90	20.6	125	28003621
<b>50,000 mm roll</b>							
LLE FLEX 8x50000 11W-1200lm/m 927 EXC3	2,700	SDCM 3	1,200	> 90	10.2	118	28003675
LLE FLEX 8x50000 11W-1200lm/m 930 EXC3	3,000	SDCM 3	1,230	> 90	10.2	121	28003676
LLE FLEX 8x50000 11W-1200lm/m 940 EXC3	4,000	SDCM 3	1,160	> 90	9.2	126	28003677
LLE FLEX 8x50000 19W-1800lm/m 927 EXC3	2,700	SDCM 3	1,790	> 90	15.3	117	28003679
LLE FLEX 8x50000 19W-1800lm/m 930 EXC3	3,000	SDCM 3	1,830	> 90	15.3	120	28003680
LLE FLEX 8x50000 19W-1800lm/m 940 EXC3	4,000	SDCM 3	1,800	> 90	14.3	126	28003681
LLE FLEX 8x50000 27W-2500lm/m 927 EXC3	2,700	SDCM 3	2,520	> 90	21.8	116	28003683
LLE FLEX 8x50000 27W-2500lm/m 930 EXC3	3,000	SDCM 3	2,450	> 90	20.6	119	28003684
LLE FLEX 8x50000 27W-2500lm/m 940 EXC3	4,000	SDCM 3	2,560	> 90	20.6	125	28003685

<sup>①</sup> Tolerance range for optical data  $\pm 15\%$ ; measurement uncertainty  $\pm 10\%$ ; Values given for 1 m LLE FLEX

# excite (EXC2), IP67 with airGAP Technology

Protection class IP67 makes the flexible continuous row partially suitable for use in bathroom luminaires and awnings. The innovative airGAP production process has allowed Tridonic to completely eliminate the usual chromaticity colour shift in higher protection classes.

This makes LLE FLEX IP67 EXC2 perfect for combining with continuous rows without an IP protection class. The result – a homogeneous lighting effect and uniform colour temperature. The specially developed flat connection systems, comprising connectors, and front and end cap, make handling easy. And the 3M adhesive tape makes installation easy, too.



At a glance:

### Module LLE FLEX IP67 EXC2

- IP67-protected flexible LED strips
- Efficiency up to 119 lm/W
- airGAP technology for stable colour temperatures without chromaticity colour shift
- High design flexibility thanks to 50 mm cutting options
- Own connectors and matching accessories
- Temperature range: -30 °C to +50 °C
- Accessories for easy connection and linking of several modules

Guarantee 5 years    Lifetime 50.000 hrs    MacAdam 3

### Module LLE FLEX CRI90 IP67 EXC2

Type	Colour-temperature (K)	Mac Adam	Typ, luminous flux tp = 65 °C <sup>1)</sup> (lm/m)	CRI	Typ, power consumption tp = 65 °C <sup>1)</sup> (W/m)	Luminous efficacy of module tp = 65 °C (lm/W)	Order No.
<b>LLE FLEX EXC2 6 W</b>							
<b>5,000 mm Role</b>							
LLE FLEX 6 W-600lm/m 927 IP67 EXC2*	2,700	SDCM 3	585	> 90	5.4	108	28003292
LLE FLEX 6 W-600lm/m 930 IP67 EXC2*	3,000	SDCM 3	595	> 90	5.4	110	28003193
LLE FLEX 6 W-600lm/m 940 IP67 EXC2*	4,000	SDCM 3	595	> 90	5.0	119	28003194
<b>LLE FLEX EXC2 12 W</b>							
LLE FLEX 12 W-1200lm/m 927 IP67 EXC2*	2,700	SDCM 3	1,180	> 90	10.8	108	28003195
LLE FLEX 12 W-1200lm/m 930 IP67 EXC2*	3,000	SDCM 3	1,200	> 90	10.8	110	28003196
LLE FLEX 12 W-1200lm/m 940 IP67 EXC2*	4,000	SDCM 3	1,200	> 90	10.2	117	28003197
<b>LLE FLEX EXC2 18 W</b>							
LLE FLEX 18 W-1800lm/m 927 IP67 EXC2*	2,700	SDCM 3	1,770	> 90	16.4	108	28003198
LLE FLEX 18 W-1800lm/m 930 IP67 EXC2*	3,000	SDCM 3	1,800	> 90	16.4	110	28003199
LLE FLEX 18 W-1800lm/m 940 IP67 EXC2*	4,000	SDCM 3	1,800	> 90	15.4	117	28003200

<sup>1)</sup> Optical tolerances and electrical data: ±10 %; data per 1 m LLE FLEX



# advanced (ADV3)

## Meter-long third-generation solutions

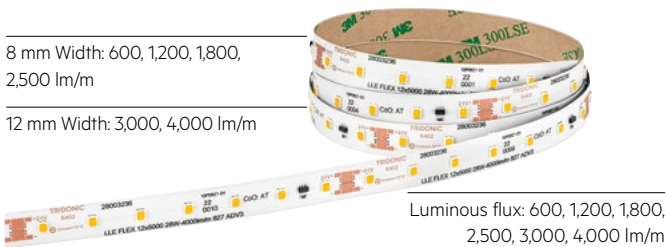
The third generation of the advanced LED strips (ADV3) enables meter-long solutions with uniformly high luminous flux. Manufactured using the reel2reel process, LLE FLEX ADV3 has absolutely no soldering points.

The module can also be precisely cut at every ten centimetres, creating high design flexibility. A chip upgrade has made the LLE FLEX ADV3 extremely efficient. The IC control ensures that the colour stability remains constant even over large stretches.

Colortemperature: 2,700, 3,000, 4,000 und 6,500 K

8 mm Width: 600, 1,200, 1,800, 2,500 lm/m

12 mm Width: 3,000, 4,000 lm/m



Luminous flux: 600, 1,200, 1,800, 2,500, 3,000, 4,000 lm/m

At a glance:

### Module LLE FLEX ADV3 | 8 + 12 mm

- reel2reel production in Austria
- Efficiency up to 150 lm/W
- Cutting option every 100 mm
- Constant luminous flux up to 10 metres
- Colour rendering CRI > 80

Guarantee 5 years

Lifetime 50.000 hrs

MacAdam 3

Made in Austria

### Module LLE FLEX CRI80 ADV3

Type	Colour-temperature (K)	Mac Adam	Typ, luminous flux tp = 65 °C <sup>1)</sup> (lm/m)	CRI	Typ, power consumption tp = 65 °C <sup>1)</sup> (W/m)	Luminous efficacy of module tp = 65 °C (lm/W)	Order No.
<b>LLE FLEX ADV3 Width: 8 mm</b>							
LLE FLEX 8x5000 4W-600 lm/m 827 ADV3*	2,700	SDCM 3	535	> 80	3.7	139	28003216
LLE FLEX 8x5000 4W-600 lm/m 830 ADV3*	3,000	SDCM 3	515	> 80	3.6	142	28003217
LLE FLEX 8x5000 4W-600 lm/m 840 ADV3*	4,000	SDCM 3	530	> 80	3.5	151	28003218
LLE FLEX 8x5000 4W-600 lm/m 865 ADV3*	6,500	SDCM 3	525	> 80	3.5	150	28003219
LLE FLEX 8x5000 8W-1200 lm/m 827 ADV3*	2,700	SDCM 3	1,090	> 80	7.9	138	28003220
LLE FLEX 8x5000 8W-1200 lm/m 830 ADV3*	3,000	SDCM 3	1,070	> 80	7.5	143	28003221
LLE FLEX 8x5000 7W-1200 lm/m 840 ADV3*	4,000	SDCM 3	1,060	> 80	7.0	151	28003222
LLE FLEX 8x5000 7W-1200 lm/m 865 ADV3*	6,500	SDCM 3	1,060	> 80	7.0	151	28003223
LLE FLEX 8x5000 12W-1800 lm/m 827 ADV3*	2,700	SDCM 3	1,650	> 80	12.2	136	28003224
LLE FLEX 8x5000 11W-1800 lm/m 830 ADV3*	3,000	SDCM 3	1,580	> 80	11.8	141	28003225
LLE FLEX 8x5000 11W-1800 lm/m 840 ADV3*	4,000	SDCM 3	1,600	> 80	10.8	149	28003226
LLE FLEX 8x5000 11W-1800 lm/m 865 ADV3*	6,500	SDCM 3	1,600	> 80	10.8	149	28003227
LLE FLEX 8x5000 17W-2500 lm/m 827 ADV3*	2,700	SDCM 3	2,300	> 80	17.1	134	28003228
LLE FLEX 8x5000 16W-2500 lm/m 830 ADV3*	3,000	SDCM 3	2,250	> 80	16.3	138	28003229
LLE FLEX 8x5000 15W-2500 lm/m 840 ADV3*	4,000	SDCM 3	2,250	> 80	15.3	147	28003230
LLE FLEX 8x5000 15W-2500 lm/m 865 ADV3*	6,500	SDCM 3	2,250	> 80	15.3	146	28003231
<b>LLE FLEX ADV3 Width: 12 mm</b>							
LLE FLEX 12x5000 21W-3000 lm/m 827 ADV3*	2,700	SDCM 3	819	> 80	19.7	146	28003232
LLE FLEX 12x5000 21W-3000 lm/m 830 ADV3*	3,000	SDCM 3	884	> 80	21.2	137	28003233
LLE FLEX 12x5000 20W-3000 lm/m 840 ADV3*	4,000	SDCM 3	819	> 80	19.7	146	28003234
LLE FLEX 12x5000 20W-3000 lm/m 865 ADV3*	6,500	SDCM 3	819	> 80	19.7	146	28003235
LLE FLEX 12x5000 28W-4000 lm/m 827 ADV3*	2,700	SDCM 3	1,169	> 80	28.1	131	28003236
LLE FLEX 12x5000 28W-4000 lm/m 830 ADV3*	3,000	SDCM 3	1,169	> 80	28.1	135	28003237
LLE FLEX 12x5000 26W-4000 lm/m 840 ADV3*	4,000	SDCM 3	1,099	> 80	26.4	143	28003238
LLE FLEX 12x5000 26W-4000 lm/m 865 ADV3*	6,500	SDCM 3	1,099	> 80	26.4	143	28003239

<sup>1)</sup>Tolerance range for optical data ±15 %; measurement uncertainty ±10 %; Values given for 1 m LLE FLEX

# essence (SNC2)

## A simple solution for decorative lighting

The dimmable 24 V LED light strip of the essence category (SNC2) combines solid performance with an attractive price. The cutting options every 50 millimetres open up great design scope, which is particularly beneficial for decorative lighting applications such

as façade, cove or indirect ceiling lighting. Different luminous fluxes and colour temperatures offer additional flexibility. Thanks to the sophisticated mounting concept, LLE FLEX SNC can be attached to a variety of surfaces without tools.



At a glance:  
**Module LLE FLEX SNC2**

- Flexible LED strips
- Efficiency up to 133 lm/W
- Maximum design flexibility thanks to 50 mm cutting options
- Light point intervals of 8.3 mm enables highly homogeneous light
- Colour consistency: Mac Adam3
- CRI > 80
- Easy installation using 3M thermal adhesive tape on different surfaces
- PCB to PCB and cable to PCB connectors for tool-free operation and connection
- Long life time of up to 50,000 hours
- 5-year guarantee

Guarantee 5 Jahre    Lifetime 50.000 hrs    MacAdam 3

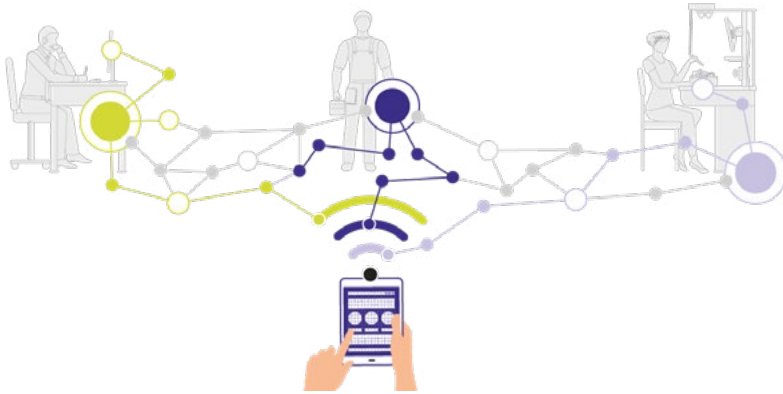
### Module LLE FLEX CRI80 SNC

Type	Colour-temperature (K)	Mac Adam	Typ. luminous flux tp = 65 °C <sup>9)</sup> (lm/m)	CRI	Typ. power consumption tp = 65 °C <sup>9)</sup> (W/m)	Luminous efficacy of module tp = 65 °C (lm/W)	Order No.
<b>LLE FLEX SNC, 600 lm</b>							
LLE FLEX 8x5.000 5W 600lm/m 827 SNC2	2.700	SDCM 3	590	> 80	5,0	118	28003323
LLE FLEX 8x5.000 5W 600lm/m 830 SNC2	3.000		620	> 80	5,0	124	28003324
LLE FLEX 8x5.000 5W 600lm/m 840 SNC2	4.000		615	> 80	4,7	133	28003325
LLE FLEX 8x5.000 5W 600lm/m 865 SNC2	6.500		610	> 80	4,7	131	28003351
<b>LLE FLEX SNC, 1200 lm</b>							
LLE FLEX 8x5.000 10W 1200lm/m 827 SNC2	2.700	SDCM 3	1.180	> 80	10,1	118	28003326
LLE FLEX 8x5.000 10W 1200lm/m 830 SNC2	3.000		1.240	> 80	10,1	124	28003327
LLE FLEX 8x5.000 10W 1200lm/m 840 SNC2	4.000		1.260	> 80	9,7	133	28003328
LLE FLEX 8x5.000 10W 1200lm/m 865 SNC2	6.500		1.250	> 80	9,7	131	28003352
<b>LLE FLEX SNC, 1800 lm</b>							
LLE FLEX 8x5.000 15W 1800lm/m 827 SNC2	2.700	SDCM 3	1.800	> 80	15,4	117	28003329
LLE FLEX 8x5.000 15W 1800lm/m 830 SNC2	3.000		1.880	> 80	15,4	122	28003330
LLE FLEX 8x5.000 15W 1800lm/m 840 SNC2	4.000		1.890	> 80	14,7	131	28003331
LLE FLEX 8x5.000 15W 1800lm/m 865 SNC2	6.500		1.870	> 80	14,7	129	28003353
<b>LLE FLEX SNC, 2.500 lm</b>							
LLE FLEX 8x5.000 21W 2500lm/m 827 SNC2	2.700	SDCM 3	2.500	> 80	21,5	117	28003332
LLE FLEX 8x5.000 21W 2500lm/m 830 SNC2	3.000		2.610	> 80	21,5	122	28003333
LLE FLEX 8x5.000 21W 2500lm/m 840 SNC2	4.000		2.640	> 80	20,3	130	28003334
LLE FLEX 8x5.000 21W 2500lm/m 865 SNC2	6.500		2.610	> 80	20,3	128	28003354

<sup>9)</sup> Tolerance range for optical data ±15 %; measurement uncertainty ±10 %; Values given for 1 m LLE FLEX

# Hassle-free wireless

## The intuitive path towards wireless luminaire communication



**The Casambi Ready basicDIM Wireless control technology allows versatile and professional interaction with all luminaires within an area – fully intuitive and with no additional wiring required.**

The basis for the wireless light management is found in the luminaire with the LED module, a 24 V constant voltage or DALI driver and one of the basicDIM Wireless modules. The control profiles are saved during the luminaire production stage. Users can choose whether to control the lighting using the 4remote BT App or via the user interface.

Up to 250 light points can be conveniently controlled via Bluetooth: switching on and off as well as dimming functions are just as simple as grouping luminaires and creating lighting settings. Tunable White luminaires change their colour temperature to suit the user and the direct and indirect light content are simple to adjust. All the elements for integrating sensors are also in place.

### Solution with 24 V constant current driver

The user communicates via 4remote BT app or user interface with the basicDIM wireless modules, which passes the information via the constant voltage 24 V drivers to the LED module.



At a glance:

#### **basicDIM Wireless Modul PMW constant voltage (CV) 4CH**

- Can be combined with 24 V constant voltage drivers and applications
- Input voltage: 12 – 24 V
- Up to 4 LLE FLEX tapes together
- FCC and UL listed version available

### Easy-to-dim LLE FLEX continuous row

The constant voltage (CV) basicDIM Wireless module is the ideal solution when you want to add a dimming function to existing accent lighting consisting of LED light lines without undertaking structural measures. Combined with non-dimmable 24 V CV drivers, an individual control module can dim up to four LLE FLEX module strips.

### Solution with basicDIM Wireless integrated 24 V constant current driver

Thanks to the premium (PRE) driver series with integrated basicDIM Wireless technology, luminaires can be constructed with even greater ease.



At a glance:

#### **basicDIM Wireless Driver constant voltage PRE (CV)**

- Dimmable 24 V constant voltage LED Driver for flexible constant voltage strips
- Small design with stretched-compact strain relief
- basicDIM Wireless enables different dimming options 1 to 100 %
- Nominal life-time up to 50,000 h, 5-year guarantee

### The advantages of drivers with integrated basicDIM Wireless technology

With premium (PRE) series drivers, just one device needs to be installed for each luminaire, saving a huge amount of space. Since no additional wiring is required, costs are reduced significantly, too.

## System solution

# The perfect 24 V system solution for flexible lighting strips

LCA 35 W/60 W/100 W/150 W  
24V one4all SC PRE



**At a glance:**  
**LCU 35-180W 24V EXC**

- Constant-voltage LED Driver 24 V
- Wide input voltage range (108-305 V)
- Not dimmable
- Small cross-section for a wide range of applications
- Long lifetime of up to 50,000 hours
- 5-year guarantee

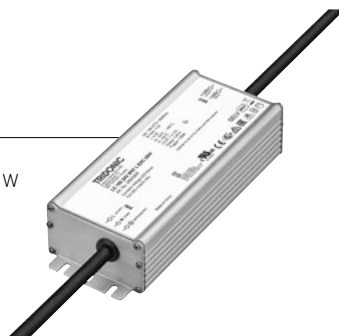
LCA 100W 24V  
one4all Ip PRE



**At a glance:**  
**LCA 35 W/60 W/100W/150W 24V one4all SC PRE**

- Constant-voltage LED Driver 24 V
- Dimming via one4all (DALI DT 6, DSI, switchDIM, corridorFUNCTION) and ready2mains interface
- Stretched Compact housing with strain relief to pin
- Type of protection IP20
- Long lifetime of up to 50,000 hours
- 5-year guarantee

LC 24 V IP67  
35 W, 75 W, 100 W, 200 W



**At a glance:**  
**LC 24 V IP67 EXC**

- 24 V constant current driver for rooms at risk of humidity
- rooms and outdoor areas
- Cast metal housing with cable for primary and secondary side
- Universal voltage: 90-305 V
- Efficiency up to 90 %
- IP-protected

LC 35 W/60 W/100 W/200 W  
24V SC SNC



**At a glance:**  
**LC 35 W/60 W/100 W/200 W SC SNC**

- Constant-voltage LED Driver 24 V
- Dimmable via PWM LED dimmers
- Dimmable by means of bDW CW modules
- Stretched Compact housing with strain relief to pin
- Type of protection IP20
- Meets the IEC 60335-1 safety standard for household appliances
- Long lifetime of up to 50,000 hours
- 5-year guarantee

LC 35 W/60 W/100 W 24V Ip SNC



**At a glance:**  
**LC 35 W/60 W/100 W 24V Ip SNC**

- Constant-voltage LED Driver 24 V
- Dimmable via PWM LED dimmers
- Dimmable bDW CW Module
- Slim Linear low profile form-factor
- Type of protection IP20
- Long lifetime of up to 50,000 hours
- 5-year guarantee

# System solution

The perfect 24 V system solution for flexible lighting strips



LC 60 W/100 W 24 V 0-10 V Ip SNC UNV

**At a glance:**

**LC 60 W / 100 W 24V (0-10V) Ip SNC UNV**

- Constant voltage LED Driver
- Universal input voltage range
- Class 2
- Type HL
- UL Listed Class P
- FCC Part 15
- Max. output power 60 W + 100 W
- Dimmable via 0 ... 10 V (incl. stand-by)
- Nominal life-time up to 50,000 h (at ta 45 °C)
- 5-year guarantee

**Order information basicDIM Wireless**

Type	Order No.
basicDIM Wireless PWM CV 4CH	28002575
basicDIM Wireless User Interface	28002213
basicDIM Wireless User Interface white	28002420

**Matching LED Driver**

LED Driver	Order No.
<b>Driver dimmable</b>	
LCA 18W 24V one4all Ip PRE	28003519
LCA 18W 24V one4all SR PRE	28003517
LCA 18W 24V one4all SR PRE SP	28003518
LCA 35W 24V one4all Ip PRE	28003520
LCA 35W 24V one4all SC PRE	28001662
LCA 60W 24V one4all Ip PRE	28003521
LCA 60W 24V one4all SC PRE	28001663
LCA 100W 24V one4all SC PRE	28001253
LCA 150W 24V one4all SC PRE	28001437
LCA 100W 24V one4all Ip PRE	28001436
<b>Driver basicDIM Wireless integrated</b>	
LC 35/24V bDW SC PRE2	28002415
LC 60/24V bDW SC PRE2	28002416
LC 100/24V bDW SC PRE2	28002417
LC 150/24V bDW SC PRE2	28002418
<b>Driver non-dimmable</b>	
LC 18W 24V SR SNC	87500931
LC 18W 24V SR SNC SP	87500932
LC 18W 24V Ip SNC	87500938
LC 35W 24V SC SNC	87500852
LC 35W 24V Ip SNC	87500854
LC 60W 24V SC SNC	87500665
LC 60W 24V Ip SNC	87500669
LC 100W 24V SC SNC	87500666
LC 100W 24V Ip SNC	87500670
LC 200W 24V SC SNC	87500855

# Perfekte Systemlösungen

## 48 V Systemlösungen für flexible 48 V LED-Streifen

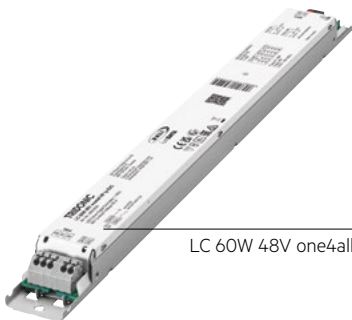


LC 35W 48V one4all NF SC EXC

At a glance:

### LC 35W/60W/100W 48V one4all NF SC EXC

- Dimmable, DALI-2 certified driver with 48 V constant voltage
- lumDATA (luminaire data, energy report, diagnosis and maintenance)
- Can be used as luminaire recessed or independent LED driver with snap-on strain relief
- Dimming range: 1-100
- one4all interface ((DALI-2, DSI, switchDIM, corridorFUNCTION)
- fade2zero function
- Simple configuration via NFC interface



LC 60W 48V one4all NF Ip EXC

At a glance:

### LC 60W/100W 48V one4all NF Ip EXC

- Dimmable, DALI-2 certified driver with 48 V constant voltage
- lumDATA (luminaire data, energy report, diagnosis and maintenance)
- Slim low-profile housing
- Dimming range: 1-100
- one4all interface ( DALI-2, DSI, switchDIM, corridorFUNCTION)
- fade2zero function
- Simple configuration via NFC interface



LC 35W 48V one4all NF h16 EXC

At a glance:

### Driver LC 35W 48V one4all NF h16 EXC

- Dimmable, DALI-2 certified driver with 48 V constant voltage
- lumDATA (luminaire data, energy report, diagnosis and maintenance)
- Slim housing with a height of only 16 mm
- Dimming range: 1-100
- one4all interface ( DALI-2, DSI, switchDIM, corridorFUNCTION)
- fade2zero function
- Simple configuration via NFC interface

# excite (EXC), 48 volt

## Even longer solutions with constant luminous flux

Compared to the 24-volt version of LLE FLEX excite (EXC), the LED light strip with 48-volt constant voltage enables twice as long lighting solutions with a consistently high luminous flux. The 48-volt version is therefore particularly advantageous when

larger distances are to be illuminated. In this case, the flexible light strip not only provides optimal light, but at the same time reduces installation and wiring effort.



At a glance:

### LLE FLEX 48 V excite

- Dimmable 48 V constant voltage LED strip for use on aluminium profiles and decorative lighting such as cove or accent lighting
- 10 meter reel with 6,25cm cut option for high freedom of design
- Module efficiency up to 163 lm/W
- Colour rendering: CRI > 80 and CRI > 90 (on demand)
- Self-adhesive 3M tape on the back for easy mounting on different surfaces
- Manufactured in Austria using the reel2reel process
- Lifetime up to 60,000 hours

Garantie 5 Jahre    Lebensdauer 50.000h    MacAdam 3    Made in Austria

### Overview LLE FLEX 48 V EXC

Type	Colour-temperature (K)	Mac Adam	Typ, luminous flux tp = 65 °C <sup>0</sup> (lm/m)	CRI	Typ, power consumption tp = 65 °C <sup>0</sup> (W/m)	Luminous efficacy of module tp = 65 °C (lm/W)	Order No.
LLE FLEX 8R10 48V 5W-600lm 827 EXC	2,700	SDCM 3	610	> 80	4.5	136	28003881
LLE FLEX 8R10 48V 5W-600lm 830 EXC	3,000	SDCM 3	625	> 80	4.5	140	28003882
LLE FLEX 8R10 48V 5W-600lm 840 EXC	4,000	SDCM 3	580	> 80	4.0	146	28003883
LLE FLEX 8R10 48V 5W-600lm 865 EXC	6,500	SDCM 3	580	> 80	4.0	146	28003884
LLE FLEX 8R10 48V 9W-1200lm 827 EXC	2,700	SDCM 3	1,240	> 80	8.9	139	28003885
LLE FLEX 8R10 48V 9W-1200lm 830 EXC	3,000	SDCM 3	1,280	> 80	8.9	144	28003886
LLE FLEX 8R10 48V 9W-1200lm 840 EXC	4,000	SDCM 3	1,210	> 80	8.1	150	28003887
LLE FLEX 8R10 48V 9W-1200lm 865 EXC	6,500	SDCM 3	1,210	> 80	8.1	150	28003888
LLE FLEX 8R10 48V 13W-1800lm 827 EXC	2,700	SDCM 3	1,840	> 80	13.1	141	28003889
LLE FLEX 8R10 48V 13W-1800lm 830EXC	3,000	SDCM 3	1,900	> 80	13.1	145	28003890
LLE FLEX 8R10 48V 13W-1800lm 840EXC	4,000	SDCM 3	1,800	> 80	11.9	151	28003891
LLE FLEX 8R10 48V 13W-1800lm 865EXC	6,500	SDCM 3	1,800	> 80	11.9	151	28003892
LLE FLEX 8R10 48V 18W-2500lm 827 EXC	2,700	SDCM 3	2,540	> 80	18.0	141	28003893
LLE FLEX 8R10 48V 18W-2500lm 830 EXC	3,000	SDCM 3	2,620	> 80	18.0	146	28003894
LLE FLEX 8R10 48V 18W-2500lm 840 EXC	4,000	SDCM 3	2,520	> 80	16.5	152	28003895
LLE FLEX 8R10 48V 18W-2500lm 865 EXC	6,500	SDCM 3	2,520	> 80	16.5	152	28003896
LLE FLEX 12R10 48V 22W-3000lm 827 EXC	2,700	SDCM 3	3,030	> 80	21.6	140	28003897
LLE FLEX 12R10 48V 22W-3000lm 830 EXC	3,000	SDCM 3	3,120	> 80	21.6	145	28003898
LLE FLEX 12R10 48V 22W-3000lm 840 EXC	4,000	SDCM 3	3,080	> 80	20.4	151	28003899
LLE FLEX 12R10 48V 22W-3000lm 865 EXC	6,500	SDCM 3	3,080	> 80	20.4	151	28003900
LLE FLEX 12R10 48V 28W-4000lm 827 EXC	2,700	SDCM 3	4,020	> 80	28.7	140	28003901
LLE FLEX 12R10 48V 28W-4000lm 830 EXC	3,000	SDCM 3	4,140	> 80	28.7	145	28003902
LLE FLEX 12R10 48V 28W-4000lm 840 EXC	4,000	SDCM 3	4,150	> 80	26.5	156	28003903
LLE FLEX 12R10 48V 28W-4000lm 865 EXC	6,500	SDCM 3	4,000	> 80	26.5	151	28003904

\* CRI90 articles on demand



# Close light

We attach great importance to a strong international presence – this allows us to stay sufficiently close to our customers

## AUSTRALIA

Tridonic Australia Pty Ltd  
2/7 Millner Ave  
Horsley Park, NSW 2175  
Australia  
T +61 2 9832 6600  
F +61 2 9832 6688  
www.tridonic.com  
infoau@tridonic.com

## AUSTRIA

Tridonic GmbH & Co KG  
(Headquarters)  
Färbergasse 15  
6851 Dornbirn, Austria  
T +43 5572 395-0  
F +43 5572 20176  
www.tridonic.com  
sales@tridonic.com

Tridonic GmbH & Co KG  
Sales Austria  
Archenweg 58  
6022 Innsbruck, Austria  
T +43 512 3321 554  
F +43 512 3321 995554  
www.tridonic.com  
vertrieb.austria@tridonic.com

## CHINA

Tridonic (Shanghai) Co., Ltd.  
(Headquarters)  
Room 602, Building B  
Zhongshan International Plaza  
No. 789 Tianshan Road  
Shanghai, 200335, China  
T +86 21 52400 599  
F +86 21 52400 230  
www.tridonic.com  
china@tridonic.com

Tridonic (Shanghai) Co., Ltd.  
Beijing Branch  
Room 1207, No. 3, Yard 1  
Tian Xin Street,  
Fang Shan District  
Beijing, 102446, China  
T +86 10 6522 6163  
F +86 10 6522 7003  
www.tridonic.com  
china@tridonic.com

Tridonic (Shanghai) Co., Ltd.  
Guangzhou Branch  
Room 505, R & F Profit Plaza  
76 Huangpu Xi Road, Tianhe District  
Guangzhou, 510623, China  
T +86 20 3839 2483  
F +86 20 3839 2482  
www.tridonic.com  
china@tridonic.com

## FRANCE

Tridonic France SARL  
8 Rue de Bruxelles  
ZI Krafft  
67150 Erstein, France  
T +33 3 88 59 62 70  
F +33 3 88 59 62 75  
www.tridonic.fr  
info.france@tridonic.com

## GERMANY

Tridonic Deutschland GmbH  
Edisonallee 1  
89231 Neu-Ulm  
Germany  
T +49 731 176629-0  
F +49 731 176629-15  
www.tridonic.de  
vertrieb.deutschland@tridonic.com

## ITALY

Tridonic Italia srl  
Via G. Savelli, 86  
35129 Padova  
Italy  
T +39 049 89 45 127  
www.tridonic.it  
vendite.italia@tridonic.com

## KOREA

Tridonic Korea LLC  
Lee Seok-Jun  
#808 HanHwa BizMetro 11  
551-24 Yangcheon-ro  
Gangseo-gu Seoul  
Republic of Korea (South)  
T +82 (2) 2013 8051  
T +82 10 2230 2221  
www.tridonic.kr  
seokjun.lee@tridonic.com

## MALAYSIA

Tridonic Malaysia Sdn Bhd  
V03-10-01 Designer Office,  
Lingkar SV,  
Sunway Velocity, Cheras  
55100 Kuala Lumpur  
Malaysia  
T +60 3 2733 6484  
T +60 3 2733 6485  
www.tridonic.com  
asean@tridonic.com

## MIDDLE EAST

Tridonic Middle East (FZE)  
Warehouse LB 4 Blue Shed Area,  
JAFZA North, Jebel Ali  
P.O. Box 17972  
Dubai, United Arab Emirates  
T +971 4 8833 664  
F +971 4 8833 665  
www.tridonic.ae  
sales.middleeast@tridonic.com

## NEW ZEALAND

Tridonic New Zealand  
PO Box 71134, Rosebank  
Auckland 1348  
27 Jomac Place, Avondale  
Auckland 1026  
T +64 9820 1119  
F +64 9820 4471  
www.tridonic.com  
sales@tridonic.co.nz

## POLAND

Tridonic Rep. Office Poland  
Poland  
www.tridonic.com  
marek.michalski@tridonic.com

## PORTUGAL

Tridonic Portugal, Unipessoal Lda.  
Rotunda Engenheiro  
Edgar Cardoso, 23, piso 8  
Vila Nova de Gaia 4400-676  
Portugal  
T +351 938 448 467  
www.tridonic.com  
ventas@tridonic.com

## SINGAPORE

Tridonic S. E. A. Pte Ltd  
158 Kallang Way  
#06-02  
349245 Singapore  
Singapore  
T +65 6749 9071  
F +65 6293 3700  
www.tridonic.com  
asean@tridonic.com

## SOUTH AFRICA

Tridonic SA (Pty) Ltd  
Unit A7, Centurion Business Park  
Cnr. Bosmansdam Road &  
Democracy Way  
Milnerton, SA, 7441  
South Africa  
T +27 21 110 5687  
www.tridonic.com  
info@tridonic.com

## SPAIN

Tridonic Iberia, S.L.  
Calle Carpinteros nº 8, 2a  
28670 Villaviciosa de Odón  
Spain  
T +34 916 162 095  
www.tridonic.es  
ventas@tridonic.com

## SWITZERLAND

Tridonic AG  
Obere Allmeind 2  
8755 Ennenda  
Switzerland  
T +41 55 645 4747  
www.tridonic.ch  
vertrieb.schweiz@tridonic.com

## TURKEY

Tridonic Aydınlatma TİC.LTD. ŞTİ.  
Kemankeş Mah., Necatibey cad.  
Akçe Sok., Akçe Han 10  
34420 Karaköy / Beyoğlu  
Istanbul, Turkey  
T +90 212 244 78 05  
F +90 212 244 78 06  
www.tridonic.com  
satis@tridonic.com

## UNITED KINGDOM

Tridonic UK Limited  
Unit 7 Lindenwood  
Chineham Business Park  
Crockford Lane, Chineham  
RG24 8LB Basingstoke  
Hampshire  
United Kingdom  
T +44 1256 374300  
www.tridonic.com  
enquiries.uk@tridonic.com

## USA

Tridonic Inc. USA  
3300 Route 9W  
Highland, NY 12528  
United States  
www.tridonic.us  
sales.us@tridonic.com

## Headquarters

Tridonic GmbH & Co KG  
Färbergasse 15 | 6851 Dornbirn, Austria  
T +43 5572 395-0 | F +43 5572 20176  
www.tridonic.com | sales@tridonic.com

Light you want to follow.

